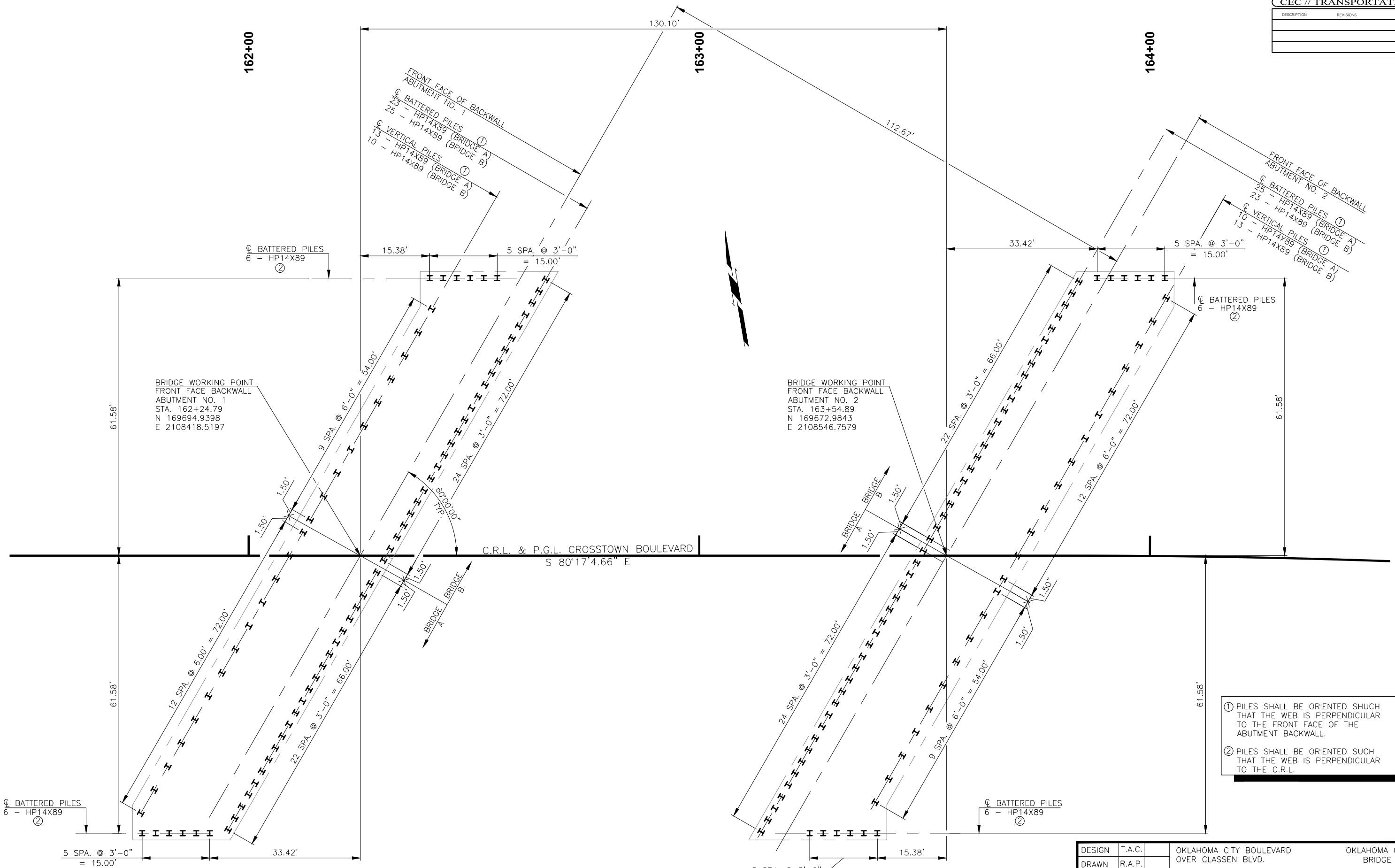


DESCRIPTION	REVISIONS	DATE



BRIDGE WORKING POINT
FRONT FACE BACKWALL
ABUTMENT NO. 1
STA. 162+24.79
N 169694.9398
E 2108418.5197

BRIDGE WORKING POINT
FRONT FACE BACKWALL
ABUTMENT NO. 2
STA. 163+54.89
N 169672.9843
E 2108546.7579

- ① PILES SHALL BE ORIENTED SUCH THAT THE WEB IS PERPENDICULAR TO THE FRONT FACE OF THE ABUTMENT BACKWALL.
- ② PILES SHALL BE ORIENTED SUCH THAT THE WEB IS PERPENDICULAR TO THE C.R.L.

SUBSTRUCTURE LAYOUT

DESIGN	T.A.C.	OKLAHOMA CITY BOULEVARD OVER CLASSEN BLVD.	OKLAHOMA COUNTY BRIDGE A & B
DRAWN	R.A.P.		
CHECKED	T.A.C.		
APPROV.	T.A.C.		
SQUAD	CEC		

SUBSTRUCTURE LAYOUT

JOB PIECE NO. 17428(88) SHEET NO. 79